

# Legislative Directory

2 0 1 6 – 2 0 1 7



**New Jersey School Boards Association**  
*Serving Local Boards of Education Since 1914*

## Effective school board leadership: the key to advancing student achievement.

Legal Boot Camp: Prominent school attorneys and experts in governance will present a comprehensive picture of the issues shaping education today. (April 2 and 10)

REGISTER TODAY

### Training

NJSBA offers training to help school boards reach their goals. Explore the opportunities.

### Services

### News and Information

## New Look, New Structure More User-Friendly Website

NJSBA's new website is easier to navigate, better organized, more user-friendly and employs a "responsive" design. Now, users can access all the website's features from anywhere, on any device.

**After extensive testing and research, the navigation for the site is divided into five main sections:**

**About NJSBA** **Access information on:** Membership, Governance, Staff and Leadership, the Educational Leadership Foundation of New Jersey and Corporate Opportunities.

**Services** **Get details on all dues- and fee-based services available through:** Policy, Labor Relations, Legal, Field Services, Technology Services, the Grants Support Program, and more.

**News and Information** **Find what you need to advocate for our schools through:** News, Publications, Research, and Reports.

**Training** **Expand your knowledge and professional development through:** Mandated Training, the Board Member Academy, Workshop, and webinars, as well as training through the County School Boards Associations and the NJSBA Field Service Representatives.

**Meetings** **Get details and plan ahead using:** The easily navigated list of available programs and meetings offered through the County School Boards Associations.

**Member Login Improved** Now, all pages include login access so that members can easily get to "Members-Only" password-protected content on the site.

Check it out at [www.njsba.org](http://www.njsba.org)

### News

Senate Approves  
March 18, 2016

Future Ready Schools  
March 15, 2016

### Discover

New Jersey's 21 counties facing public school  
Learn more

### Contact Us

New Jersey School Board Assn.  
411 West State St.  
Trenton, NJ 08610  
Phone: 609-952-1000  
Fax: 609-952-1000



© Copyright 2016 New Jersey School Boards Association



# 2016-2017 Legislative Directory



**New Jersey School Boards Association**

LEGISLATIVE DIRECTORY, 2016-2017

Published in the United States of America

Prepared by the Governmental Relations Department

Graphics by the Communications Department



# Table of Contents

---

<b>THE LEGISLATIVE PROCESS HOW YOU CAN PARTICIPATE</b>	5
<hr/>	
<b>STATE LEGISLATORS ALPHA LISTING BY HOUSE</b>	9
<hr/>	
<b>SCHOOL BOARD DISTRICT LOCATOR</b>	11
<hr/>	
<b>CHARTER SCHOOL LOCATOR</b>	29
<hr/>	
<b>STATE LEGISLATORS DISTRICT LOCATOR</b>	32
<hr/>	
<b>STATE LEGISLATIVE LEADERSHIP</b>	57
<hr/>	
<b>STATE LEGISLATIVE COMMITTEES</b>	60
<hr/>	
<b>THE NEW JERSEY 114TH CONGRESS</b>	64



## THE LEGISLATIVE PROCESS HOW YOU CAN PARTICIPATE

---

The New Jersey Legislature is made up of two Houses, the General Assembly and the Senate. There are two General Assembly representatives and one Senator from each of the 40 legislative districts in the state.

Each House of the Legislature elects a leader—the President of the Senate (first in line of succession to the Governor) and the Speaker of the General Assembly (second in line). Both leaders set committee meeting and voting session schedules, appoint committee chairs and members, refer bills to committee, post bills for floor votes and preside over the routine business of their respective Houses.

The New Jersey Legislature generally meets on Mondays and Thursdays. On a committee day, there will usually be meetings in the morning and afternoon. Committees are divided into groups and the groups are usually assigned a day and time to meet. On voting session days, members of each party meet in caucus to discuss the bills to be voted upon with the voting session following. Both voting sessions and committee meetings are open to the general public. Floor sessions can be viewed in the public galleries located on the second floor of the State House on West State Street in Trenton. Committee meetings are held in the State House Annex, adjacent to the State House.

Committees are established to deal with particular issue areas. Issues that NJSBA deals with most frequently are often heard in the Education or Appropriations committees of each respective House, although a bill can be referred to any committee. If a bill is not passed during a two-year legislative session, it has to be reintroduced in the new session before it can be considered again.

A legislative session lasts two years and begins the second Tuesday in January of each even-numbered year. Any legislation introduced during a legislative session can be considered in committee and voted upon if brought before the full House.

## COMMUNICATING WITH YOUR LEGISLATORS

---

The most effective means of communication is to e-mail, call or write a letter to inform your Assembly representatives or Senator where you stand on an issue.

**E-Mail** If you're pressed for time, e-mail is probably the most effective way to get in touch. It also allows for correspondence record-keeping.

**Phone Call** Most legislators track issue interest by phone-call numbers. If you know your legislator/aide, a call can advise them you are watching.

**Snail Mail** A well-written letter stands out because it's rare. It also makes a highly effective thank-you.

**Personal Meeting** NJSBA's Governmental Relations staff will be happy to help you coordinate a meeting. Once you've met with your legislator and established a relationship, all other contact methods become more effective.

### More tips on reaching out to legislators:

- If a bill is in committee, send your correspondence to the committee chair and to all committee members. Always copy the sponsor of the bill.
- If the bill has passed both Houses of the Legislature and awaiting action by the Governor, send correspondence directly to the Governor.
- Always send a copy of your correspondence to your legislators and NJSBA's Governmental Relations Department. Together, we are a forceful lobbying team.
- Regardless of the outcome, thank your legislators when they have supported your position on an issue.
- Use the same strategy with your Congressman and U.S. Senator if it is a federal matter. Please note, however, that all mail sent to Washington D.C. undergoes security screening that results in delayed delivery. If you have time-sensitive materials to send, e-mail or fax may be more expeditious.

Remember to be courteous and brief in communicating with your legislators. Be well-informed and express your appreciation for their time and attention. Try to be positive/informative, not defensive/hostile. Even if you disagree, you may need their support another time.



## **IMPORTANT WEB SITES**

---

**[www.njsba.org](http://www.njsba.org)**

New Jersey School Boards Association

**[www.nj.gov/governor](http://www.nj.gov/governor)**

The Governor & his Administration

**[www.state.nj.us](http://www.state.nj.us)**

The State of New Jersey

**<http://education.state.nj.us/directory/>**

New Jersey Department of Education

**[www.njasa.com](http://www.njasa.com)**

New Jersey Association of School Administrators

**[www.njpsa.org](http://www.njpsa.org)**

New Jersey Principals and Supervisors Association

**[www.state.nj.us/education/data/](http://www.state.nj.us/education/data/)**

New Jersey Department of Education Data Page

**[www.njleg.state.nj.us](http://www.njleg.state.nj.us)**

New Jersey State Legislature

**[www.njea.org](http://www.njea.org)**

New Jersey Education Association

**[www.nsba.org](http://www.nsba.org)**

National School Boards Association

**[www.nces.ed.gov/](http://www.nces.ed.gov/)**

National Center for Education Statistics

**[www.ed.gov/](http://www.ed.gov/)**

US Department of Education

**[www.policy.rutgers.edu/CUPR/](http://www.policy.rutgers.edu/CUPR/)**

Rutgers Center for Urban Policy Research

**[www.edlawcenter.org/](http://www.edlawcenter.org/)**

Education Law Center

**<http://cesp.rutgers.edu/>**

Center for Effective School Practices, Rutgers

**[www.policy.rutgers.edu/](http://www.policy.rutgers.edu/)**

Edward J. Bloustein School of Planning and Public Policy, Rutgers

## **NJSBA GOVERNMENTAL RELATIONS**

---

**Phone:** 609-278-5213

**Toll Free:** 1888-88NJSBA (1-888-886-5722)

**Fax:** 609-394-1103

**Web Site:** [www.njsba.org/gr](http://www.njsba.org/gr)

**Michael Vrancik**, Director

[mvrancik@njsba.org](mailto:mvrancik@njsba.org)

609-278-5239

**John Burns, Esq.**, Counsel

[jburns@njsba.org](mailto:jburns@njsba.org)

609-278-5275

**Sharon Seyler**, Legislative Advocate

[sseyler@njsba.org](mailto:sseyler@njsba.org)

609-278-5282

**Christopher Jones**, Legislative Advocate

[cjones@njsba.org](mailto:cjones@njsba.org)

609-278-5225

**Jonathan Pushman**, Legislative Advocate

[jpushman@njsba.org](mailto:jpushman@njsba.org)

609-278-5248

**Anette Airey**, Administrative Assistant

[aairey@njsba.org](mailto:aairey@njsba.org)

609-278-5213

## STATE LEGISLATORS ALPHABETICAL LISTING

---

Name, Party Affiliation, District Number

### NEW JERSEY SENATE

---

<b>Addiego, Dawn Marie</b> R-8	<b>Madden, Fred H.</b> D-4
<b>Allen, Diane B.</b> R-7	<b>Oroho, Steven V.</b> R-24
<b>Bateman, Christopher "Kip"</b> R-16	<b>O'Toole, Kevin J.</b> R-40
<b>Beach, James</b> D-6	<b>Pennacchio, Joseph</b> R-26
<b>Beck, Jennifer</b> R-11	<b>Pou, Nellie</b> D-35
<b>Bucco, Anthony R.</b> R-25	<b>Rice, Ronald L.</b> D-28
<b>Cardinale, Gerald</b> R-39	<b>Ruiz, M. Teresa</b> D-29
<b>Codey, Richard J.</b> D-27	<b>Sacco, Nicholas J.</b> D-32
<b>Connors, Christopher J.</b> R-9	<b>Sarlo, Paul A.</b> D-36
<b>Cruz-Perez, Nilsa</b> D-5	<b>Scutari, Nicholas P.</b> D-22
<b>Cunningham, Sandra B.</b> D-31	<b>Singer, Robert W.</b> R-30
<b>Diegnan, Patrick J.</b> D-18	<b>Smith, Bob</b> D-17
<b>Doherty, Michael J.</b> R-23	<b>Stack, Brian P.</b> D-33
<b>Gill, Nia H.</b> D-34	<b>Sweeney, Stephen M.</b> D-3
<b>Gordon, Robert M.</b> D-38	<b>Thompson, Samuel D.</b> R-12
<b>Greenstein, Linda R.</b> D-14	<b>Turner, Shirley K.</b> D-15
<b>Holzapfel, James W.</b> R-10	<b>Van Drew, Jeff</b> D-1
<b>Kean, Thomas H.</b> R-21	<b>Vitale, Joseph F.</b> D-19
<b>Kyrillos, Joseph M.</b> R-13	<b>Weinberg, Loretta</b> D-37
<b>Lesniak, Raymond J.</b> D-20	<b>Whelan, Jim</b> D-2

### NEW JERSEY GENERAL ASSEMBLY

---

<b>Andrzejczak, Bob</b> D-1	<b>Chaparro, Annette</b> D-33
<b>Auth, Robert</b> R-39	<b>Chiaravallotti, Nicholas</b> D-31
<b>Barclay, Arthur</b> D-5	<b>Ciattarelli, Jack M.</b> R-16
<b>Benson, Daniel R.</b> D-14	<b>Clifton, Robert D.</b> R-12
<b>Bramnick, Jon M.</b> R-21	<b>Conaway, Herb</b> D-7
<b>Brown, Chris A.</b> R-2	<b>Coughlin, Craig J.</b> D-19
<b>Bucco, Anthony M.</b> R-25	<b>Dancer, Ronald S.</b> R-12
<b>Burzichelli, John J.</b> D-3	<b>Danielsen, Joe</b> D-17
<b>Caputo, Ralph R.</b> D-28	<b>DeAngelo, Wayne P.</b> D-14
<b>Caride, Marlene</b> D-36	<b>DeCroce, BettyLou</b> R-26
<b>Carroll, Michael Patrick</b> R-25	

## STATE LEGISLATORS ALPHABETICAL LISTING

---

Name, Party Affiliation, District Number

<b>DiMaio, John</b> R-23	<b>Mukherji, Raj</b> D-33
<b>Downey, Joann</b> D-11	<b>Munoz, Nancy F.</b> R-21
<b>Egan, Joseph V.</b> D-17	<b>Muoio, Elizabeth Maher</b> D-15
<b>Eustace, Timothy J.</b> D-38	<b>Oliver, Sheila Y.</b> D-34
<b>Giblin, Thomas P.</b> D-34	<b>O'Scanlon, Declan J.</b> R-13
<b>Gove, DiAnne C.</b> R-9	<b>Peterson, Erik</b> R-23
<b>Green, Jerry</b> D-22	<b>Phoebus, Gail</b> R-24
<b>Greenwald, Louis D.</b> D-6	<b>Pinkin, Nancy J.</b> D-18
<b>Gusciora, Reed</b> D-15	<b>Pintor Marin, Eliana</b> D-29
<b>Handlin, Amy H.</b> R-13	<b>Prieto, Vincent</b> D-32
<b>Holley, Jamel C.</b> D-20	<b>Quijano, Annette</b> D-20
<b>Houghtaling, Eric</b> D-11	<b>Rible, David P.</b> R-30
<b>Howarth, Joe</b> R-8	<b>Rodriguez-Gregg, Maria</b> R-8
<b>Jasey, Mila M.</b> D-27	<b>Rumana, Scott T.</b> R-40
<b>Jimenez, Angelica M.</b> D-32	<b>Rumpf, Brian E.</b> R-9
<b>Johnson, Gordon M.</b> D-37	<b>Russo, David C.</b> R-40
<b>Jones, Patricia Egan</b> D-5	<b>Schaer, Gary S.</b> D-36
<b>Karabinchak, Robert</b> D-18	<b>Schepisi, Holly T.</b> R-39
<b>Kean, Sean T.</b> R-30	<b>Singleton, Troy</b> D-7
<b>Kennedy, James J.</b> D-22	<b>Space, Parker</b> R-24
<b>Lagana, Joseph A.</b> D-38	<b>Spencer, L. Grace</b> D-29
<b>Lampitt, Pamela R.</b> D-6	<b>Sumter, Shavonda E.</b> D-35
<b>Land, R. Bruce</b> D-1	<b>Taliaferro, Adam J.</b> D-3
<b>Mazzeo, Vincent</b> D-2	<b>Tucker, Cleopatra G.</b> D-28
<b>McGuckin, Gregory P.</b> R-10	<b>Vainieri Huttle, Valerie</b> D-37
<b>McKeon, John F.</b> D-27	<b>Webber, Jay</b> R-26
<b>McKnight, Angela V.</b> D-31	<b>Wimberly, Benjie E.</b> D-35
<b>Moriarty, Paul D.</b> D-4	<b>Wisniewski, John S.</b> D-19
<b>Mosquera, Gabriela</b> D-4	<b>Wolfe, David W.</b> R-10
	<b>Zwicker, Andrew</b> D-16

## SCHOOL BOARD DISTRICT LOCATOR

State District	Board of Education	Congressional District
2	Absecon	2
23	Alexandria Twp.	7
24	Allamuchy	5
40	Allendale	5
11	Allenhurst	6
3	Alloway Twp.	2
23	Alpha	7
37	Alpine	5
24	Andover Reg.	5
11	Asbury Park	6
2	Atlantic City	2
1, 2	Atlantic Co. Spl. Svcs. & Atlantic Co. Voc	2
13	Atlantic Highlands	6
5	Audubon	1
1	Avalon	2
30	Avon by the Sea	4
9	Barnegat	2
5	Barrington	1
9	Bass River	2
10	Bay Head	4
31	Bayonne	10
9	Beach Haven	2
23	Bedminster	7
29	Belleville	8
5	Bellmawr	1
30	Belmar	4
24	Belvidere	5
38	Bergen Co. Spl. Svcs	5
38	Bergen Co. Technical	5
38	Bergenfield	5
21	Berkeley Heights	7

<b>State District</b>	<b>Board of Education</b>	<b>Congressional District</b>
9	Berkeley Twp.	3
8	Berlin Boro	1
6	Berlin Twp.	1
21	Bernards Twp.	7
23	Bethlehem Twp.	7
7	Beverly	3
4, 5	Black Horse Pike Reg.	1
24	Blairstown	5
28	Bloomfield	11
39	Bloomington	11
23	Bloomsbury	7
37	Bogota	5
25	Boonton Town	11
25	Boonton Twp.	11
7	Bordentown Reg.	3
23	Bound Brook	12
30	Bradley Beach	4
16	Branchburg Twp.	7
10	Brick Twp.	3
3	Bridgeton	2
23	Bridgewater-Raritan Reg.	7
30	Brielle	4
2	Brigantine	2
5	Brooklawn	1
2	Buena Reg.	2
7	Burlington City	3
7	Burlington Co. Inst. of Tech.	3
7	Burlington Co. Spl. Svcs.	3
7	Burlington Twp.	3
26	Butler	11
24	Byram Twp.	11
26, 27	Caldwell-W. Caldwell	11
23	Califon	7

<b>State District</b>	<b>Board of Education</b>	<b>Congressional District</b>
5	Camden City	1
5	Camden Co. Technical	1
1	Cape May City	2
1	Cape May Co. Spl. Svcs.	2
1	Cape May Co. Vo-Tech	2
1	Cape May Point	2
36	Carlstadt	9
36	Carlstadt-E. Rutherford Reg.	9
19	Carteret	6
40	Cedar Grove	11
9, 10	Central Reg.	3
6	Cherry Hill	1
4	Chesilhurst	1
25	Chester Twp.	7
12	Chesterfield	3
7	Cinnaminson	3
22	Clark Twp.	7
3	Clayton	2
5	Clearview Reg.	2
4	Clementon	1
36	Cliffside Park	9
34	Clifton	9
23	Clinton Twp.	7
39	Closter	5
6	Collingswood	1
11	Colts Neck Twp.	4
1	Commercial Twp.	2
1	Corbin City	2
14	Cranbury Twp.	12
21	Cranford	7
37	Cresskill	9
1, 3	Cumberland Co. Voc.	2
1, 3	Cumberland Reg.	2

<b>State District</b>	<b>Board of Education</b>	<b>Congressional District</b>
11	Deal	6
3	Deerfield Twp.	2
7	Delanco	3
16	Delaware Twp.	7
23	Delaware Valley Reg.	7
7	Delran	3
3	Delsea Reg.	2
39	Demarest	5
1	Dennis Twp.	2
25	Denville	11
5	Deptford Twp.	1
1	Downe Twp.	2
39	Dumont	5
22	Dunellen	12
9	Eagleswood	2
15	East Amwell	7
18	East Brunswick Twp.	12
3	East Greenwich	1,2
27	East Hanover Twp.	11
32	East Newark	8
34	East Orange	10
36	East Rutherford	9
14	East Windsor Reg.	12
8	Eastampton Twp.	3
6	Eastern Camden Co. Reg.	1
11	Eatontown	4
32	Edgewater	9
7	Edgewater Park	3
18	Edison Twp.	6
2	Egg Harbor City	2
2	Egg Harbor Twp.	2
20	Elizabeth	8
3	Elk Twp.	2



<b>State District</b>	<b>Board of Education</b>	<b>Congressional District</b>
3	Elmer Boro	2
35	Elmwood Park	9
3	Elsinboro	2
39	Emerson	5
37	Englewood City	9
37	Englewood Cliffs	9
26, 27, 28, 29	Essex Co. Voc.	10, 11
27	Essex Fells	11
1	Estell Manor	2
8	Evesham Twp.	3
15	Ewing Twp.	12
13	Fair Haven Boro	4
38	Fair Lawn	5
26	Fairfield, Essex Co.	11
1	Fairfield Twp., Cumberland Co.	2
32	Fairview	8
30	Farmingdale	4
16	Flemington-Raritan Reg.	7
7	Florence Twp.	3
27	Florham Park	11
2	Folsom	2
37	Fort Lee	9
24	Frankford Twp.	5
24	Franklin Boro Sussex Co.	5
40	Franklin Lakes	5
3	Franklin Twp. Gloucester Co.	2
23	Franklin Twp. Hunterdon Co.	7
17	Franklin Twp. Somerset Co.	12
23	Franklin Twp. Warren Co.	7
24	Fredon Twp.	5
11	Freehold Boro	4
11, 12	Freehold Reg.	4
11	Freehold Twp.	4

<b>State District</b>	<b>Board of Education</b>	<b>Congressional District</b>
24	Frelinghuysen	5
23	Frenchtown	7
9	Galloway Twp.	2
35	Garfield	9
21	Garwood	7
3	Gateway Reg.	1
6	Gibbsboro	1
3	Glassboro	1
28	Glen Ridge	10
38	Glen Rock	5
5	Gloucester City	1
4	Gloucester Twp.	1
24	Great Meadows Reg.	5
22	Green Brook	7
24	Green Twp.	5
1	Greewich Twp.CumberlandCo.	2
3	GreenwichTwp.Gloucester Co.	1
23	Greenwich Twp. Warren Co.	7
2	Grtr. Egg Harbor Reg.	2
32	Guttenberg	8
37	Hackensack	5
23	Hackettstown	5
5	Haddon Heights	1
6	Haddon Twp.	1
6	Haddonfield	1
8	Hainesport Twp.	3
35	Haledon	9
24	Hamburg	5
2	Hamilton Twp. Atlantic Co.	2
14	Hamilton Twp. Mercer Co.	4
8	Hammonton	2
23	Hampton Hunterdon Co.	7
24	Hampton Twp. Sussex Co.	5

<b>State District</b>	<b>Board of Education</b>	<b>Congressional District</b>
27	Hanover Park Reg.	11
27	Hanover Twp.	11
27	Harding Twp.	11
24	Hardyston Twp.	5
23	Harmony	7
39	Harrington Park	5
32	Harrison, Hudson Co.	8
5	Harrison Twp. Gloucester Co.	2
38	Hasbrouck Heights	9
39	Haworth	5
38	Hawthorne	9
13	Hazlet Twp.	6
13	Henry Hudson Reg.	6
23	High Bridge	7
24	High Point Reg.	5
18	Highland Park	6
13	Highlands Borough	6
16	Hillsborough Twp.	7
39	Hillsdale	5
20	Hillside Twp.	10
6	Hi-Nella	1
33	Hoboken	8
40	Ho-Ho-Kus	5
23	Holland Twp.	7
13	Holmdel Twp.	4
24	Hopatcong	11
24	Hope Twp.	5
1	Hopewell Twp. Cumberland	2
15	Hopewell Valley Reg.	12
30	Howell Twp.	4
31, 32, 33	Hudson Co. Schools of Tech.	8, 10
15, 16	Hunterdon Central Reg.	7
15, 16	Hunterdon Co. Voc.	7

<b>State District</b>	<b>Board of Education</b>	<b>Congressional District</b>
11	Interlaken	6
28	Irvington	10
10	Island Heights	3
12	Jackson Twp.	4
14	Jamesburg	12
26	Jefferson Twp.	11
31, 33	Jersey City	8, 10
13	Keansburg	6
32	Kearny	8, 9
21	Kenilworth	7
13	Keyport	6
3	Kingsway Reg.	1, 2
23	Kingwood	7
26	Kinnelon	11
24	Kittatinny Reg.	5
24	Knowlton Twp.	5
9	Lacey Twp.	3
24	Lafayette	5
30	Lake Como	4
10	Lakehurst	4
39	Lakeland Reg.	5, 11
30	Lakewood	4
4	Laurel Springs	1
10	Lavallette	3
5	Lawnside	1
1	Lawrence Twp. Cumberland Co.	2
15	Lawrence Twp. Mercer Co.	12
23	Lebanon Boro	7
23	Lebanon Twp.	7
8	Lenape Reg.	3
24	Lenape Valley Reg.	7, 11
37	Leonia	9
26	Lincoln Park	11

<b>State District</b>	<b>Board of Education</b>	<b>Congressional District</b>
22	Linden	10
4	Lindenwold	1
2	Linwood	2
9	Little Egg Harbor Twp.	2
40	Little Falls Twp.	11
36	Little Ferry Twp.	9
13	Little Silver	4
27	Livingston	11
38	Lodi	5
3	Logan Twp.	1
9	Long Beach Island	2
11	Long Branch	6
21	Long Hill Twp.	11
2	Longport	2
23	Lopatcong	7
3	Lower Alloways Creek	2
1	Lower Cape May Reg.	2
1	Lower Twp.	2
8	Lumberton	3
36	Lyndhurst	9
27	Madison	11
5	Magnolia	1
39	Mahwah Twp.	5
2	Mainland Reg.	2
12	Manalapan-Englishtown Reg.	4
30	Manasquan	4
10	Manchester Twp.	4
3	Mannington Twp.	2
8	Mansfield Twp. Burlington Co.	3
23	Mansfield Twp. Warren Co.	5
5	Mantua	2
16	Manville	12
6	Maple Shade	1

<b>State District</b>	<b>Board of Education</b>	<b>Congressional District</b>
2	Margate City	2
13	Marlboro Twp.	6
12, 13	Matawan-Aberdeen Reg.	6
1	Maurice River Twp.	2
38	Maywood	5
8	Medford Lakes	3
8	Medford Twp.	3
25	Mendham Borough	11
25	Mendham Twp.	11
14, 15	Mercer Co. Tech. School	4, 12
6	Merchantville	1
18	Metuchen	6
1	Middle Twp.	2
22	Middlesex Boro	12
18	Middlesex Co. Voc.	12
13	Middletown Twp.	4, 6
40	Midland Park	5
23	Milford	7
27	Millburn Twp.	7
12	Millstone Twp. Monmouth Co.	4
17	Milltown	12
1	Millville	2
25	Mine Hill Twp.	7
13	Monmouth Beach	6
11, 12, 13	Monmouth Co. Voc.	4, 6
11	Monmouth Reg.	4
4	Monroe Twp. Gloucester Co.	1
14	Monroe Twp. Middlesex Co.	12
24	Montague	5
34	Montclair	10, 11
16	Montgomery Twp.	7
39	Montvale	5
26	Montville Twp.	11

<b>State District</b>	<b>Board of Education</b>	<b>Congressional District</b>
36	Moonachie	9
7	Moorestown Twp.	3
25	Morris Co. Voc.	7, 11
25	Morris Hills Reg.	7, 11
26	Morris Plains	11
25	Morris School District	11
25	Mount Arlington	7
5	Mount Ephraim Borough	1
8	Mount Holly	3
7	Mount Laurel Twp.	3
24	Mount Olive	7
25	Mountain Lakes	11
21	Mountainside	7
2	Mullica Twp.	2
3	National Park	1
11	Neptune City	4
11	Neptune Twp.	4
25	Netcong	7
17	New Brunswick	6
12	New Hanover Twp.	3
38	New Milford	5
21	New Providence	7
28, 29	Newark	8, 10
3	Newfield	2
24	Newton	5
36	North Arlington	9
32	North Bergen	8, 9
17	North Brunswick	12
26	North Caldwell	11
35	North Haledon	11
12	North Hanover	3
23	North Hunterdon Voorhees Reg.	7
22	North Plainfield	7

<b>State District</b>	<b>Board of Education</b>	<b>Congressional District</b>
24	North Warren Reg.	5
1	North Wildwood	2
12	Northern Burlington Co. Reg.	3
40	Northern Highlands Reg.	5
39	Northern Valley Reg.	5
2	Northfield City	2
37	Northvale	5
39	Norwood	5
28	Nutley	11
39	Oakland	5
6	Oaklyn	1
1	Ocean City	2
9, 10	Ocean Co. Voc.	3, 4
9	Ocean Gate	3
11	Ocean Twp. Monmouth Co.	4
9	Ocean Twp. Ocean Co.	3
13	Oceanport	6
24	Ogdensburg	11
12	Old Bridge Twp.	12
39	Old Tappan	5
3	Oldmans Twp.	2
38	Oradell	5
34	Orange	10
24	Oxford	5
37	Palisades Park	9
7	Palmyra	1
38	Paramus	5
39	Park Ridge	5
26	Parsippany-Troy Hills	11
39	Pascack Valley Reg.	5
36	Passaic City	8
40	Passaic Co. Voc.	8
35	Passaic Co.-Manchester Reg.	8



<b>State District</b>	<b>Board of Education</b>	<b>Congressional District</b>
40	Passaic Valley Reg.	8
35	Paterson	8
3	Paulsboro	1
8	Pemberton Twp.	3
3	Penns Grove-Carneys Point	2
6	Pennsauken	1
3	Pennsville	2
40	Pequannock Twp.	11
19	Perth Amboy	6
23	Phillipsburg	7
8	Pine Hill	1
9	Pinelands Reg.	2
17	Piscataway Twp.	6
4	Pitman	2
3	Pittsgrove Twp.	2
22	Plainfield	12
2	Pleasantville	2
12	Plumsted	4
23	Pohatcong Twp.	7
10	Point Pleasant Beach	4
30	Point Pleasant Boro	4
40	Pompton Lakes	11
9	Port Republic	2
16	Princeton	12
35	Prospect Park	8
3	Quinton	2
22	Rahway	10
39, 40	Ramapo-Indian Hills Reg.	5
39	Ramsey	5
8	Rancocas Valley Reg.	3
25	Randolph Twp.	11
16	Readington	7
11	Red Bank	4

<b>State District</b>	<b>Board of Education</b>	<b>Congressional District</b>
11, 13	Red Bank Reg.	4
36	Ridgefield	9
36	Ridgefield Park	9
40	Ridgewood	5
39	Ringwood	5
38	River Dell Reg.	5
38	River Edge	5
39	River Vale	5
40	Riverdale	11
7	Riverside Twp.	3
7	Riverton	3
14	Robbinsville Twp.	4
38	Rochelle Park	5
25	Rockaway Boro	11
26	Rockaway Twp.	11
37	Rockleigh	5
12	Roosevelt Borough	4
27	Roseland	11
20	Roselle	10
21	Roselle Park	10
25	Roxbury Twp.	7
13	Rumson	4
13	Rumson Fair Haven Reg.	4
5	Runnemede	1
36	Rutherford	9
38	Saddle Brook Twp.	9
39	Saddle River	5
3	Salem City	2
3	Salem Co. Bd. for Voc. Education	2
3	Salem Co. Spl. Svcs.	2
24	Sandyston Walpack	5
19	Sayreville	6
27	Sch. Dist. of the Chathams	11

<b>State District</b>	<b>Board of Education</b>	<b>Congressional District</b>
22	Scotch Plains-Fanwood Reg.	7, 12
30	Sea Girt	4
1	Sea Isle City	2
10	Seaside Heights	3
9	Seaside Park	3
32	Secaucus	9
8	Shamong Twp.	3
11	Shore Reg.	6
11	Shrewsbury Boro	4
6	Somerdale	1
2	Somers Point	2
17, 22, 23, 25	Somerset Co. Voc.	7, 12
25	Somerset Hills	7
16	Somerville	7
19	South Amboy	6
23	South Bound Brook	12
16	South Brunswick	12
36	South Hackensack	9
3	South Harrison Twp.	2
15, 16, 23	South Hunterdon Reg.	7
27	South Orange-Maplewood	10
18	South Plainfield	6
18	South River	12
8	Southampton Twp.	3
9	Southern Reg.	2
24	Sparta Twp.	11
3, 4, 5	Special Svcs & Voc. School District of Gloucester	1, 2
14	Spotswood	12
30	Spring Lake	4
30	Spring Lake Heights	4
8	Springfield Twp. Burlington Co.	3
21	Springfield Union Co.	7

<b>State District</b>	<b>Board of Education</b>	<b>Congressional District</b>
9	Stafford Twp.	2
24	Stanhope	11
6	Sterling HS District	1
24	Stillwater Twp.	5
1	Stone Harbor	2
1	Stow Creek	2
6	Stratford	1
21	Summit	7
24	Sussex Co. Technical	5
24	Sussex Wantage Reg.	5
3	Swedesboro-Woolwich	2
9	Tabernacle Twp.	3
37	Teaneck	5, 9
37	Tenafly	9
36	Teterboro	9
23	Tewksbury Twp.	7
23	The Clinton-Glen Gardner	7
11	Tinton Falls	4
10	Toms River Reg.	3
40	Totowa	11
25	Town of Dover	7
15	Trenton	12
9	Tuckerton	2
13	Union Beach	6
33	Union City	8
20, 21, 22	Union Co. Voc. Tech.	7, 12
23	Union Twp. Hunterdon Co.	7
20	Union Twp. Union Co.	7
3	Upper Deerfield Twp.	2
12	Upper Freehold Reg.	4
3	Upper Pittsgrove Twp.	2
39	Upper Saddle River	5
1	Upper Twp.	2

<b>State District</b>	<b>Board of Education</b>	<b>Congressional District</b>
2	Ventnor City	2
24	Vernon Twp.	5
26	Verona	11
1	Vineland	2
6	Voorhees Twp.	1
40	Waldwick	5
30	Wall Twp.	4
36	Wallington	9
24	Walkkill Valley Reg.	5, 11
39	Wanaque	11
23, 24	Warren Co. Spl. Svcs.	5, 7
23, 24	Warren Co. Tech.	5, 7
23	Warren Hills Reg.	5, 7
21	Warren Twp.	7
23	Washington Boro. Warren Co.	5
9	Washington Twp. Burlington Co.	2
4	Washington Twp. Gloucester Co.	1
25	Washington Twp. Morris Co.	7
23	Washington Twp. Warren Co.	5
21	Watchung	7
21	Watchung Hills Reg.	7
8	Waterford Twp.	2
40	Wayne Twp.	11
33	Weehawken Twp.	8
5	Wenonah	1
1	West Cape May	2
3	West Deptford Twp.	1
26	West Essex Reg.	11
11	West Long Branch	6
26	West Milford	5
25	West Morris Reg.	7, 11
32	West New York	8
27	West Orange	10, 11

<b>State District</b>	<b>Board of Education</b>	<b>Congressional District</b>
1	West Wildwood	2
15	West Windsor-Plainsboro Reg.	12
8	Westampton Twp.	3
21	Westfield	7
5	Westville	1
39	Westwood Reg.	5
1	Weymouth Twp.	2
25	Wharton Boro	7
24	White Twp.	5
1	Wildwood City	2
1	Wildwood Crest	2
7	Willingboro Twp.	3
22	Winfield	7
4	Winslow Twp.	1
1	Woodbine	2
19	Woodbridge Twp.	6
5	Woodbury	1
3	Woodbury Heights	1
39	Woodcliff Lake	5
40	Woodland Park	11
8	Woodland Twp.	3
5	Woodlynne	1
36	Wood-Ridge	9
3	Woodstown-Pilesgrove Reg.	2
40	Wyckoff	5

<b>State District</b>	<b>Charter School</b>	<b>Congressional District</b>
30	Academy Charter High School	4
19	Academy for Urban Leadership Charter HS	6
2	Atlantic City Community Charter School	2
33	Beloved Charter School	10
7	Benjamin Bannecker Preparatory Charter School	3
35, 37, 38	Bergen Arts and Science Charter School	9
2	Bridgeton Public Charter School	2
28	Burch Charter School of Excellence	10
5	Camden Academy Charter HS	1
5	Camden Community Charter School	1
5	Camden's Pride Charter School	1
5	Camden's Promise Charter School	1
17	Central Jersey College Prep Charter School	12
2	Charter Tech HS for Performing Arts	2
34	Classical Academy Charter School of Clifton	9
22	College Achieve Central Charter School	12
35	Community Charter School of Paterson	9
1	Compass Academy Charter School	2
28	Discovery Charter School	10
33	Dr. Lena Edwards Academic Charter School	10
34	East Orange Community Charter School	10
33	Elysian Charter School of Hoboken	8
31, 33	Empowerment Academy Charter School	8, 10
37	Englewood on Palisades Charter School	9
5	Environment Community Opportunity CS	1
15	Foundation Academy Charter School	12
5	Freedom Academy Charter School	1
28	Gray Charter School	10
17	Greater Brunswick Charter School	6
33	Great Futures	10
28	Great Oaks Charter School	10
18	Hatikvah International Academy Charter School	12

<b>State District</b>	<b>Charter School</b>	<b>Congressional District</b>
33	Hoboken Charter School	8
33	Hoboken Dual Language Charter School	8
11	Hope Academy Charter School	6
5	Hope Community Charter School	1
2	International Academy of Atlantic City	2
15	International Academy of Trenton	12
15	International Charter School of Trenton	12
33	Jersey City Community Charter School	10
33	Jersey City Global Charter School	10
33	Jersey City Golden Door Charter School	10
35	John P. Holland Charter School	8
4	Kingdom Charter School for Leadership	1
5	Knowledge A to Z Charter School	1
32	Lady Liberty Academy Charter School	8
5	LEAP Academy University Charter School	1
33	Learning Community Charter School	10
28, 29	Link Community Charter School	8, 10
28	Maria L. Varisco-Rogers Charter School	10
28	Marion P. Thomas Charter School	10
28	Merit Preparatory of Newark Charter School	10
33	METS Charter School	10
1	Millville Public Charter School	2
28	Newark Educators Charter School	10
28	Newark Legacy Charter School	10
28	Newark Prep	10
28	New Horizons Community Charter School	10
28	North Star Academy Charter School of Newark	10
14	PACE Charter School of Hamilton	4
36	Passaic Arts and Science Charter School	9
35	Paterson Arts and Science Charter School	9
35	Paterson Charter School for Science & Technology	9



<b>State District</b>	<b>Charter School</b>	<b>Congressional District</b>
15	Paul Robeson Charter School for the Humanities	12
28	Paulo Freire Charter School	10
28	People's Preparatory Charter School	10
28	Philip's Academy Charter School	10
34	Pride Academy Charter School	10
16	Princeton Charter School	12
22	Queen City Academy Charter School	12
11	Red Bank Charter School	4
24	Ridge and Valley Charter School	5
7	Riverbank Charter School of Excellence	3
28	Robert Treat Academy Charter School	10
28	Roseville Community Charter School	10
33	Soaring Heights Charter School	10
24	Sussex County Charter School for Technology	11
28	TEAM Academy Charter School	10
37	Teaneck Community Charter School	5
22	The Barack Obama Green Charter HS	12
33	The Ethical Community Charter School	10
17	Thomas Edison EnergySmart Charter School	12
15	Trenton STEM to Civics Charter School	12
22	Union County TEAMS Charter School	12
25	Unity Charter School	11
33	University Academy Charter HS	10
28	University Heights Charter School	10
15	Village Charter School	12
1	Vineland Public Charter School	2

## STATE LEGISLATORS DISTRICT LOCATOR

---

### 1

**(Atlantic, Cape May and Cumberland)** Avalon, Cape May, Cape May Point, Commercial, Corbin City, Dennis, Downe, Estell Manor, Fairfield (Cumberland), Greenwich (Cumberland), Hopewell (Cumberland), Lawrence (Cumberland), Lower, Maurice River, Middle, Millville, North Wildwood, Ocean City, Sea Isle City, Shiloh, Stone Harbor, Stow Creek, Upper, Vineland, West Cape May, West Wildwood, Weymouth, Wildwood, Wildwood Crest, Woodbine



**Senator Jeff Van Drew (D)**

School House Office Park, 211 S. Main St  
Ste 104, Cape May Court House NJ 08210

**Ph:** 609-465-0700 **EM:** SenVanDrew@njleg.org

**Occupation:** Dentist



**Assemblyman Bob Andrzejczak (D)**

School House Office Park, 211 S. Main St  
Ste 104, Cape May Court House NJ 08210

**Ph:** 609-465-0700 **EM:** AsmAndrzejczak@njleg.org

**Occupation:** Legislator



**Assemblyman R. Bruce Land (D)**

1117 E. Landis Ave  
Vineland, NJ 08360

**Ph:** 856-696-7109 **EM:** AsmLand@njleg.org

**Occupation:** Legislator

### 2

**(Atlantic)** Absecon, Atlantic City, Brigantine, Buena, Buena Vista, Egg Harbor City, Egg Harbor Township, Folsom, Hamilton (Atlantic), Linwood, Longport, Margate City, Mullica, Northfield, Pleasantville, Somers Point, Ventnor City



**Senator Jim Whelan (D)**

507 Tilton Rd  
Northfield NJ 08225

**Ph:** 609-383-1388 **EM:** SenWhelan@njleg.org

**Occupation:** Legislator

## STATE LEGISLATORS DISTRICT LOCATOR

---



**Assemblyman Chris A. Brown (R)**

2021 New Rd, Ste 24  
Linwood NJ 08221

**Ph:** 609-677-8266 **EM:** AsmChrisABrown@njleg.org

**Occupation:** Attorney



**Assemblyman Vincent Mazzeo (D)**

507 Tilton Rd  
Northfield NJ 08225

**Ph:** 609-383-1388 **EM:** AsmMazzeo@njleg.org

**Occupation:** Business Owner

**3**

**(Cumberland, Gloucester and Salem)** Alloway, Bridgeton, Carneys Point, Clayton, Deerfield, East Greenwich, Elk, Elmer, Elsinboro, Franklin (Gloucester), Glassboro, Greenwich (Gloucester), Logan, Lower Alloways Creek, Mannington, National Park, Newfield, Oldmans, Paulsboro, Penns Grove, Pennsville, Pilesgrove, Pittsgrove, Quinton, Salem, South Harrison, Swedesboro, Upper Deerfield, Upper Pittsgrove, West Deptford, Woodbury Heights, Woodstown, Woolwich



**Senator Stephen M. Sweeney (D)**

935 Kings Highway, Ste 400  
W. Deptford NJ 08086

**Ph:** 856-251-9801 **EM:** SenSweeney@njleg.org

**Occupation:** Vice President, International Association of Iron Workers



**Assemblyman John J. Burzichelli (D)**

935 Kings Highway, Ste 400  
W. Deptford NJ 08086

**Ph:** 856-251-9801 **EM:** AsmBurzichelli@njleg.org

**Occupation:** Business Owner



**Assemblyman Adam J. Taliaferro (D)**

199 East Broadway, 1st Floor, Ste G  
Salem NJ 08079

**Ph:** 856-251-9801 **EM:** AsmTaliaferro@njleg.org

**Occupation:** Policy Analyst

## STATE LEGISLATORS DISTRICT LOCATOR

---

### 4

**(Camden and Gloucester)** Chesilhurst, Clementon, Gloucester Township, Laurel Springs, Lindenwold, Monroe (Gloucester), Pitman, Washington (Gloucester), Winslow



**Senator Fred H. Madden Jr. (D)**

129 Johnson Rd, Ste 1  
Turnersville NJ 08012

**Ph:** 856-232-6700 **EM:** SenMadden@njleg.org

**Occupation:** Dean, Gloucester County Police Academy



**Assemblyman Paul D. Moriarty (D)**

129 Johnson Rd, Ste 1  
Turnersville NJ 08012

**Ph:** 856-232-6700 **EM:** AsmMoriarty@njleg.org

**Occupation:** Media Consultant



**Assemblywoman Gabriela M. Mosquera (D)**

129 Johnson Rd, Ste 1  
Turnersville NJ 08012

**Ph:** 856-232-6700 **EM:** AswMosquera@njleg.org

**Occupation:** Legislator

### 5

**(Camden and Gloucester)** Audubon, Audubon Park, Barrington, Bellmawr, Brooklawn, Camden, Deptford, Gloucester City, Haddon Heights, Harrison (Gloucester), Lawnside, Magnolia, Mantua, Mount Ephraim, Runnemede, Wenonah, Westville, Woodbury, Woodlynne



**Senator Nilsa Cruz-Perez (D)**

231 Market St  
Camden NJ 08102

**Ph:** 856-541-1251 **EM:** SenCruzperez@njleg.org

**Occupation:** Director of Constituent Services Camden County

## STATE LEGISLATORS DISTRICT LOCATOR

---



**Assemblyman Arthur Barclay (D)**

515 White Horse Pike  
Audubon, NJ 08106

**Ph:** 856-547-4800 **EM:** [AsmBarclay@njleg.org](mailto:AsmBarclay@njleg.org)

**Occupation:** Supervisor, Camden County Department of Events and Community Outreach



**Assemblywoman Patricia Egan Jones**

515 White Horse Pike  
Audubon NJ 08106

**Ph:** 856-547-4800 **EM:** [AswJones@njleg.org](mailto:AswJones@njleg.org)

**Occupation:** Legislator

## 6

**(Burlington and Camden)** Berlin Township, Cherry Hill, Collingswood, Gibbsboro, Haddon, Haddonfield, Hi-Nella, Maple Shade, Merchantville, Oaklyn, Pennsauken, Somerdale, Stratford, Tavistock, Voorhees



**Senator James Beach (D)**

1309 Route 70 West  
Cherry Hill NJ 08002

**Ph:** 856-429-1572 **EM:** [SenBeach@njleg.org](mailto:SenBeach@njleg.org)

**Occupation:** Property Damage Specialist



**Assemblyman Louis D. Greenwald (D)**

1101 Laurel Oak Rd, Ste 150  
Voorhees NJ 08043

**Ph:** 856-435-1247 **EM:** [AsmGreenwald@njleg.org](mailto:AsmGreenwald@njleg.org)

**Occupation:** Attorney



**Assemblywoman Pamela R. Lampitt (D)**

1101 Laurel Oak Rd, Ste 150  
Voorhees NJ 08043

**Ph:** 856-435-1247 **EM:** [AswLampitt@njleg.org](mailto:AswLampitt@njleg.org)

**Occupation:** University Administrator

## STATE LEGISLATORS DISTRICT LOCATOR

---

### 7

**(Burlington)** Beverly, Bordentown, Bordentown Township, Burlington, Burlington Township, Cinnaminson, Delanco, Delran, Edgewater Park, Fieldsboro, Florence, Moorestown, Mount Laurel, Palmyra, Riverside, Riverton, Willingboro



**Senator Diane B. Allen (R)**

504 Route 130 North, Ste 100  
Cinnaminson NJ 08077

**Ph:** 856-314-8835 **EM:** SenAllen@njleg.org

**Occupation:** Legislator



**Assemblyman Herb Conaway Jr. (D)**

Delran Professional Center  
8008 Route 130 North, Bldg C, Ste 450  
Delran NJ 08075

**Ph:** 856-461-3997 **EM:** AsmConaway@njleg.org

**Occupation:** Physician



**Assemblyman Troy Singleton (D)**

400 N. Church St, Ste 260  
Moorestown, NJ 08057

**Ph:** 856-234-2790 **EM:** AsmSingleton@njleg.org

**Occupation:** Assistant to Executive Secretary, Treasurer of Northeast Regional Council of Carpenters

### 8

**(Atlantic, Burlington and Camden)** Berlin Borough, Eastampton, Evesham, Hainesport, Hammonton, Lumberton, Mansfield (Burlington), Medford, Medford Lakes, Mount Holly, Pemberton Borough, Pemberton Township, Pine Hill, Pine Valley, Shamong, Southampton, Springfield (Burlington), Waterford, Westampton, Woodland



**Senator Dawn Marie Addiego (R)**

176 Route 70, Ste 13  
Medford NJ 08055

**Ph:** 609-654-1498 **EM:** SenAddiego@njleg.org

**Occupation:** Attorney

## STATE LEGISLATORS DISTRICT LOCATOR

---



**Assemblyman Joe Howarth (R)**

176 Route 70, Ste 13  
Medford NJ 08055

**Ph:** 609-654-1498 **EM:** [AsmHowarth@njleg.org](mailto:AsmHowarth@njleg.org)

**Occupation:** Paraprofessional/Special Education, Lenape Regional High School District



**Assemblywoman Maria Rodriguez-Gregg (R)**

176 Route 70, Ste 13  
Medford NJ 08055

**Ph:** 609-654-1498 **EM:** [AswRodriguez-Gregg@njleg.org](mailto:AswRodriguez-Gregg@njleg.org)

**Occupation:** Legislator

# 9

**(Atlantic, Burlington and Ocean)** Barnegat, Barnegat Light, Bass River, Beach Haven, Beachwood, Berkeley, Eagleswood, Galloway, Harvey Cedars, Lacey, Little Egg Harbor, Long Beach, Ocean Gate, Ocean Township (Ocean), Pine Beach, Port Republic, Seaside Park, Ship Bottom, South Toms River, Stafford, Surf City, Tabernacle, Tuckerton, Washington (Burlington)



**Senator Christopher J. Connors (R)**

620 West Lacey Rd  
Forked River NJ 08731

**Ph:** 609-693-6700 **EM:** [SenConnors@njleg.org](mailto:SenConnors@njleg.org)

**Occupation:** Attorney



**Assemblywoman DiAnne C. Gove (R)**

620 West Lacey Rd  
Forked River NJ 08731

**Ph:** 609-693-6700 **EM:** [AswGove@njleg.org](mailto:AswGove@njleg.org)

**Occupation:** Legislator



**Assemblyman Brian E. Rumpf (R)**

620 West Lacey Rd  
Forked River NJ 08731

**Ph:** 609-693-6700 **EM:** [AsmRumpf@njleg.org](mailto:AsmRumpf@njleg.org)

**Occupation:** Attorney

## STATE LEGISLATORS DISTRICT LOCATOR

---

### 10

**(Ocean)** Bay Head, Brick, Island Heights, Lakehurst, Lavallette, Manchester, Mantoloking, Point Pleasant Beach, Seaside Heights, Toms River



**Senator James W. Holzapfel (R)**

852 Hwy 70  
Brick NJ 08724

**Ph:** 732-840-9028 **EM:** SenHolzapfel@njleg.org

**Occupation:** Attorney



**Assemblyman Gregory P. McGuckin (R)**

852 Hwy 70  
Brick NJ 08724

**Ph:** 732-840-9028 **EM:** AsmMcGuckin@njleg.org

**Occupation:** Attorney



**Assemblyman David W. Wolfe (R)**

852 Hwy 70  
Brick NJ 08724

**Ph:** 732-840-9028 **EM:** AsmWolfe@njleg.org

**Occupation:** College Professor

### 11

**(Monmouth)** Allenhurst, Asbury Park, Colts Neck, Deal, Eatontown, Freehold Borough, Freehold Township, Interlaken, Loch Arbour, Long Branch, Neptune, Neptune Township, Ocean Township (Monmouth), Red Bank, Shrewsbury Borough, Shrewsbury Township, Tinton Falls, West Long Branch



**Senator Jennifer Beck (R)**

32 Monmouth St, 3rd Floor  
Red Bank NJ 07701

**Ph:** 732-933-1591 **EM:** SenBeck@njleg.org

**Occupation:** Business Executive



**Assemblywoman Joann Downey (D)**

802 West Park Ave, Ste 221  
Ocean Twp., NJ 07712

**Ph:** 732-695-3371 **EM:** AswDowney@njleg.org

**Occupation:** Trial Attorney



## STATE LEGISLATORS DISTRICT LOCATOR

---



**Assemblyman Eric Houghtaling (D)**

802 West Park Ave, Ste 221  
Ocean Twp., NJ 07712

**Ph:** 732-695-3371 **EM:** AsmHoughtaling@njleg.org

**Occupation:** Electrician, LU 400 IBEW

# 12

**(Burlington, Middlesex, Monmouth and Ocean)** Allentown, Chesterfield, Englishtown, Jackson, Manalapan, Matawan, Millstone (Monmouth), New Hanover, North Hanover, Old Bridge, Plumsted, Roosevelt, Upper Freehold, Wrightstown



**Senator Samuel D. Thompson (R)**

2501 Highway 516, Ste 101  
Old Bridge NJ 08857

**Ph:** 732-607-7580 **EM:** SenThompson@njleg.org

**Occupation:** Legislator



**Assemblyman Robert D. Clifton (R)**

935 Highway 34, Ste 3B  
Matawan, NJ 07747

**Ph:** 732-970-6386 **EM:** AsmClifton@njleg.org

**Occupation:** Director of Local Government Affairs, Comcast Cable



**Assemblyman Ronald S. Dancer (R)**

405 Route 539  
Cream Ridge NJ 08514

**Ph:** 609-758-0205 **EM:** AsmDancer@njleg.org

**Occupation:** Legislator

# 13

**(Monmouth)** Aberdeen, Atlantic Highlands, Fair Haven, Hazlet, Highlands, Holmdel, Keansburg, Keyport, Little Silver, Marlboro, Middletown, Monmouth Beach, Oceanport, Rumson, Sea Bright, Union Beach



**Senator Joseph M. Kyrillos, Jr. (R)**

10 Highway 35, 2nd Floor  
Middletown NJ 07701

**Ph:** 732-671-3206 **EM:** SenKyrillos@njleg.org

**Occupation:** Senior Managing Director, Newmark Grubb Knight Frank; Director, Newport Capitol

## STATE LEGISLATORS DISTRICT LOCATOR

---



**Assemblywoman Amy H. Handlin (R)**

225 Route 35, Ste 202  
Red Bank NJ 07701

**Ph:** 732-383-7820 **EM:** AswHandlin@njleg.org

**Occupation:** College Professor



**Assemblyman Declan J. O'Scanlon, Jr. (R)**

32 Monmouth St., 3rd Floor  
Red Bank NJ 07701

**Ph:** 732-933-1591 **EM:** AsmOScanlon@njleg.org

**Occupation:** Business Executive

### 14

**(Mercer and Middlesex)** Cranbury, East Windsor, Hamilton (Mercer), Hightstown, Jamesburg, Monroe (Middlesex), Plainsboro, Robbinsville, Spotswood



**Senator Linda R. Greenstein (D)**

1249 South River Rd, Ste 105  
Cranbury NJ 08512

**Ph:** 609-395-9911 **EM:** SenGreenstein@njleg.org

**Occupation:** Legislator



**Assemblyman Daniel R. Benson (D)**

3691A Nottingham Way  
Hamilton Square NJ 08690

**Ph:** 609-631-0198 **EM:** AsmBenson@njleg.org

**Occupation:** Consultant



**Assemblyman Wayne P. DeAngelo (D)**

4621A Nottingham Way  
Hamilton NJ 08690

**Ph:** 609-631-7501 **EM:** AsmDeAngelo@njleg.org

**Occupation:** Union Business Manager

## STATE LEGISLATORS DISTRICT LOCATOR

15

**(Hunterdon and Mercer)** East Amwell, Ewing, Hopewell Borough (Mercer), Hopewell Township (Mercer), Lambertville, Lawrence (Mercer), Pennington, Trenton, West Amwell, West Windsor



**Senator Shirley K. Turner (D)**

Parkway Corporate Center  
1230 Parkway Ave, Ste 103  
Ewing NJ 08628

**Ph:** 609-323-7239 **EM:** SenTurner@njleg.org

**Occupation:** Legislator



**Assemblyman Reed Gusciora (D)**

144 West State St  
Trenton NJ 08608

**Ph:** 609-571-9638 **EM:** AsmGusciora@njleg.org

**Occupation:** Attorney



**Assemblywoman Elizabeth Maher Muoio**

144 West State St  
Trenton NJ 08608

**Ph:** 609-571-9638 **EM:** AswMuoio@njleg.org

**Occupation:** Director of Economic Development, Mercer County

16

**(Hunterdon, Mercer, Middlesex and Somerset)** Branchburg, Delaware, Flemington, Hillsborough, Manville, Millstone (Somerset), Montgomery, Princeton, Raritan (Hunterdon), Readington, Rocky Hill, Somerville, South Brunswick, Stockton



**Senator Christopher "Kip" Bateman (R)**

36 East Main St  
Somerville NJ 08876

**Ph:** 908-526-3600 **EM:** SenBateman@njleg.org

**Occupation:** Attorney



**Assemblyman Jack M. Ciattarelli (R)**

50 Division St, Ste 200  
Somerville NJ 08876

**Ph:** 908-450-7064 **EM:** AsmCiattarelli@njleg.org

**Occupation:** Business Exec.

## STATE LEGISLATORS DISTRICT LOCATOR

---



**Assemblyman Andrew Zwicker (D)**

23 Orchard Rd, Ste 170  
Skillman, NJ 08558

**Ph:** 609-454-3147 **EM:** AsmZwicker@njleg.org

**Occupation:** Head of Science Education Department,  
Princeton University

### 17

**(Middlesex and Somerset)** Franklin (Somerset), Milltown, New Brunswick, North Brunswick, Piscataway



**Senator Bob Smith (D)**

216 Stelton Rd, Ste E-5  
Piscataway NJ 08854

**Ph:** 732-752-0770 **EM:** SenBSmith@njleg.org

**Occupation:** Attorney



**Assemblyman Joe Danielsen (D)**

334 Elizabeth Ave  
Somerset NJ 08873

**Ph:** 732-247-3999 **EM:** AsmDanielsen@njleg.org

**Occupation:** Business Owner



**Assemblyman Joseph V. Egan (D)**

100 Bayard St  
New Brunswick NJ 08901

**Ph:** 732-249-4550 **Em:** AsmEgan@njleg.org

**Occupation:** Union Business Manager

### 18

**(Middlesex)** East Brunswick, Edison, Helmetta, Highland Park, Metuchen, South Plainfield, South River



**Senator Patrick J. Diegnan, Jr. (D)**

908 Oak Tree Ave, Unit P  
South Plainfield NJ 07080

**Ph:** 908-757-1677 **EM:** SenDiegnan@njleg.org

**Occupation:** Attorney

## STATE LEGISLATORS DISTRICT LOCATOR

---



**Assemblyman Robert Karabinchak (D)**

3 Stephenville Pkwy., Ste 2D  
Edison NJ 08820

**Ph:** 732-548-1406 **EM:** AsmKarabinchak@njleg.org

**Occupation:** President, Tri-Form Construction, Inc.



**Assemblywoman Nancy J. Pinkin (D)**

3 Stephenville Pkwy, Ste 2D  
Edison NJ 08820

**Ph:** 732-548-1406 **EM:** AswPinkin@njleg.org

**Occupation:** Health Consultant

**19**

**(Middlesex)** Carteret, Perth Amboy, Sayreville, South Amboy,  
Woodbridge



**Senator Joseph F. Vitale (D)**

569 Rahway Ave  
Woodbridge NJ 07095

**Ph:** 732-855-7441 **EM:** SenVitale@njleg.org

**Occupation:** Business Executive



**Assemblyman Craig J. Coughlin (D)**

569 Rahway Ave  
Woodbridge NJ 07095

**Ph:** 732-855-7441 **EM:** AsmCoughlin@njleg.org

**Occupation:** Attorney



**Assemblyman John S. Wisniewski (D)**

132 Main St, Ste A  
Sayreville NJ 08872

**Ph:** 732-432-8460 **EM:** AsmWisniewski@njleg.org

**Occupation:** Attorney

**20**

**(Union)** Elizabeth, Hillside, Roselle, Union (Union)



**Senator Raymond J. Lesniak (D)**

985 Stuyvesant Ave  
Union NJ 07083

**Ph:** 908-624-0880 **EM:** SenLesniak@njleg.org

## STATE LEGISLATORS DISTRICT LOCATOR

---



**Occupation:** Attorney

**Assemblyman Jamel C. Holley (D)**

985 Stuyvesant Ave  
Union NJ 07083

**Ph:** 908-624-0880 **EM:** AsmHolley@njleg.org



**Occupation:** Director of Public Works, Irvington

**Assemblywoman Annette Quijano (D)**

65 Jefferson Ave, Ste B  
Elizabeth NJ 07201

**Ph:** 908-327-9119 **EM:** AswQuijano@njleg.org

**Occupation:** Municipal Prosecutor

## 21

**(Morris, Somerset and Union)** Berkeley Heights, Bernards, Chatham Borough, Cranford, Far Hills, Garwood, Kenilworth, Long Hill, Mountainside, New Providence, Roselle Park, Springfield (Union), Summit, Warren, Watchung, Westfield



**Senator Thomas H. Kean, Jr. (R)**

425 North Ave East, Ste C  
Westfield NJ 07090

**Ph:** 908-232-3673 **EM:** SenTKean@njleg.org

**Occupation:** Legislator



**Assemblyman Jon M. Bramnick (R)**

251 North Ave West, 2nd Floor  
Westfield NJ 07090

**Ph:** 908-232-2073 **EM:** AsmBramnick@njleg.org

**Occupation:** Attorney



**Assemblywoman Nancy F. Munoz (R)**

57 Union Place, Ste 310  
Summit NJ 07901

**Ph:** 908-918-0414 **EM:** AswMunoz@njleg.org

## STATE LEGISLATORS DISTRICT LOCATOR

---

**Occupation:** Legislator

**22**

**(Middlesex, Somerset and Union)** Clark, Dunellen, Fanwood, Green Brook, Linden, Middlesex, North Plainfield, Plainfield, Rahway, Scotch Plains, Winfield



**Senator Nicholas P. Scutari (D)**  
1514 E. Saint Georges Ave, 2nd Floor  
Linden NJ 07036

**Ph:** 908-587-0404 **EM:** SenScutari@njleg.org



**Occupation:** Attorney

**Assemblyman Jerry Green (D)**  
200 West 2nd Street, Ste 102  
Plainfield NJ 07060

**Ph:** 908-561-5757 **EM:** AsmGreen@njleg.org



**Occupation:** Business Consultant

**Assemblyman James J. Kennedy (D)**  
34 East Cherry Street  
Rahway, NJ 07065

**Ph:** 732-943-2660 **EM:** AsmKennedy@njleg.org

**Occupation:** Principal, Skye Consulting L.L.C.

**23**

**(Hunterdon, Somerset and Warren)** Alexandria, Alpha, Bedminster, Bethlehem, Bloomsbury, Bound Brook, Bridgewater, Califon, Clinton, Clinton Township, Franklin (Hunterdon), Franklin (Warren), Frenchtown, Glen Gardner, Greenwich (Warren), Hackettstown, Hampton (Hunterdon), Harmony, High Bridge, Holland, Kingwood, Lebanon Borough, Lebanon Township, Lopatcong, Mansfield (Warren), Milford, Peapack-Gladstone, Phillipsburg, Pohatcong, Raritan (Somerset), South Bound Brook, Tewksbury, Union (Hunterdon), Washington Borough (Warren), Washington Township (Warren)



**Senator Michael J. Doherty (R)**  
127 Belvidere Ave, 2nd Floor  
Washington NJ 07882

**Ph:** 908-835-0552 **EM:** SenDoherty@njleg.org

## STATE LEGISLATORS DISTRICT LOCATOR

---



**Occupation:** Attorney

**Assemblyman John DiMaio (R)**

245 Route 22, Ste 208  
Bridgewater NJ 08807

**Ph:** 908-722-1365 **EM:** AsmDimaio@njleg.org



**Occupation:** Business Exec

**Assemblyman Erik Peterson (R)**

178 Center St, Ste 2B  
Clinton NJ 08809

**Ph:** 908-238-0251 **EM:** AsmPeterson@njleg.org

**Occupation:** Attorney

## 24

**(Morris, Sussex and Warren)** Allamuchy, Andover Borough, Andover Township, Belvidere, Blairstown, Branchville, Byram, Frankford, Franklin (Sussex), Fredon, Frelinghuysen, Green, Hamburg, Hampton (Sussex), Hardwick, Hardyston, Hopatcong, Hope, Independence, Knowlton, Lafayette, Liberty, Montague, Mount Olive, Newton, Ogdensburg, Oxford, Sandyston, Sparta, Stanhope, Stillwater, Sussex, Vernon, Walpack, Wantage, White



**Senator Steven V. Oroho (R)**

One Wilson Drive, Ste 2B  
Sparta NJ 07871

**Ph:** 973-300-0200 **EM:** SenOroho@njleg.org

**Occupation:** Certified Financial Planner



**Assemblywoman Gail Phoebus (R)**

One Wilson Drive, Ste 2B  
Sparta NJ 07871

**Ph:** 973-300-0200 **EM:** AswPhoebus@njleg.org

**Occupation:** Business Owner



**Assemblyman Parker Space (R)**

One Wilson Drive, Ste 2B  
Sparta NJ 07871

**Ph:** 973-300-0200 **EM:** AsmSpace@njleg.org

**Occupation:** Business Owner



## STATE LEGISLATORS DISTRICT LOCATOR

---

25

**(Morris and Somerset)** Bernardsville, Boonton, Boonton Township, Chester Borough, Chester Township, Denville, Dover, Mendham Borough, Mendham Township, Mine Hill, Morris, Morristown, Mount Arlington, Mountain Lakes, Netcong, Randolph, Rockaway Borough, Roxbury, Victory Gardens, Washington (Morris), Wharton



**Senator Anthony R. Bucco (R)**

75 Bloomfield Ave, Ste 302 3rd Floor  
Denville NJ 07834

**Ph:** 973-627-9700 **EM:** SenBucco@njleg.org

**Occupation:** President, Baker/Titan Adhesives



**Assemblyman Anthony M. Bucco (R)**

1040 Route 10 West 1st Floor  
Randolph NJ 07869

**Ph:** 973-927-2526 **EM:** AsmBucco@njleg.org

**Occupation:** Attorney



**Assemblyman Michael Patrick Carroll (R)**

146 Speedwell Ave  
Morris Plains NJ 07950

**Ph:** 973-539-8113 **EM:** AsmCarroll@njleg.org

**Occupation:** Attorney

26

**(Essex, Morris and Passaic)** Butler, Fairfield (Essex), Jefferson, Kinnelon, Lincoln Park, Montville, Morris Plains, North Caldwell, Parsippany-Troy Hills, Rockaway Township, Verona, West Caldwell, West Milford



**Senator Joseph Pennacchio (R)**

170 Changebridge Rd, Unit A1  
Montville, NJ 07045

**Ph:** 973-227-4012 **EM:** SenPennacchio@njleg.org

**Occupation:** Dentist

## STATE LEGISLATORS DISTRICT LOCATOR

---



**Assemblywoman BettyLou DeCroce (R)**

1055 Parsippany Blvd, Ste 104  
Parsippany NJ 07054

**Ph:** 973-265-0057 **EM:** AswDeCroce@njleg.org

**Occupation:** Business Owner



**Assemblyman Jay Webber (R)**

1055 Parsippany Blvd, Ste 104  
Parsippany NJ 07054

**Ph:** 973-265-0057 **EM:** AsmWebber@njleg.org

**Occupation:** Attorney

## 27

**(Essex and Morris)** Caldwell, Chatham Township, East Hanover, Essex Fells, Florham Park, Hanover, Harding, Livingston, Madison, Maplewood, Millburn, Roseland, South Orange, West Orange



**Senator Richard J. Codey (D)**

66 W. Mount Pleasant Ave  
Livingston NJ 07039

**Ph:** 973-535-5017 **EM:** SenCodey@njleg.org

**Occupation:** Insurance Consultant



**Assemblywoman Mila M. Jasey (D)**

511 Valley Street  
Maplewood NJ 07040

**Ph:** 973-762-1886 **EM:** AswJasey@njleg.org

**Occupation:** Legislator



**Assemblyman John F. McKeon (D)**

221 Main Street  
Madison NJ 07940

**Ph:** 973-377-1606 **EM:** AsmMcKeon@njleg.org

**Occupation:** Attorney

## STATE LEGISLATORS DISTRICT LOCATOR

---

28

(Essex) Bloomfield, Glen Ridge, Irvington, Newark, Nutley



**Senator Ronald L. Rice (D)**

1044 South Orange Ave  
Newark NJ 07106

**Ph:** 973-371-5665 **EM:** SenRice@njleg.org

**Occupation:** Legislator



**Assemblyman Ralph R. Caputo (D)**

148-152 Franklin St  
Belleville NJ 07109

**Ph:** 973-450-0484 **EM:** AsmCaputo@njleg.org

**Occupation:** Legislator



**Assemblywoman Cleopatra G. Tucker (D)**

400 Lyons Ave  
Newark NJ 07112

**Ph:** 973-926-4320 **EM:** AswTucker@njleg.org

**Occupation:** Legislator

29

(Essex) Belleville, Newark



**Senator M. Teresa Ruiz (D)**

166 Bloomfield Ave  
Newark NJ 07104

**Ph:** 973-484-1000 **EM:** SenRuiz@njleg.org

**Occupation:** Deputy Chief of Staff, Essex County Executive



**Assemblywoman Eliana Pintor Marin (D)**

263 Lafayette St, 1st Floor  
Newark NJ 07105

**Ph:** 973-589-0713 **EM:** AswPintorMarin@njleg.org

**Occupation:** Division Manager, Essex County Clerk's Office



**Assemblywoman L. Grace Spencer (D)**

223 Hawthorne Ave  
Newark NJ 07112

**Ph:** 973-624-1730 **EM:** AswSpencer@njleg.org

**Occupation:** Attorney

## STATE LEGISLATORS DISTRICT LOCATOR

---

### 30

**(Monmouth and Ocean)** Avon-by-the-Sea, Belmar, Bradley Beach, Brielle, Farmingdale, Howell, Lake Como, Lakewood, Manasquan, Point Pleasant, Sea Girt, Spring Lake, Spring Lake Heights, Wall



**Senator Robert W. Singer (R)**

1771 Madison Ave, Ste 202  
Lakewood NJ 08701

**Ph:** 732-987-5669 **EM:** SenSinger@njleg.org

**Occupation:** Legislator



**Assemblyman Sean T. Kean (R)**

1955 Highway 34, Bldg 2A  
Wall Township NJ 07719

**Ph:** 732-974-0400 **EM:** AsmSKean@njleg.org

**Occupation:** Attorney



**Assemblyman David P. Rible (R)**

1955 Highway 34, Bldg 2A  
Wall Township NJ 07719

**Ph:** 732-974-0400 **EM:** AsmRible@njleg.org

**Occupation:** Legislator

### 31

**(Hudson)** Bayonne, Jersey City



**Senator Sandra B. Cunningham (D)**

1738 Kennedy Blvd  
Jersey City NJ 07305

**Ph:** 201-451-5100 **EM:** SenCunningham@njleg.org

**Occupation:** Administrator, Cunningham Foundation



**Assemblyman Nicholas Chiaravalloti (D)**

836 Broadway  
Bayonne, NJ 07002

**Ph:** 201-471-2347 **EM:** AsmChiaravalloti@njleg.org

**Occupation:** Attorney

## STATE LEGISLATORS DISTRICT LOCATOR

---



**Assemblywoman Angela V. McKnight (D)**

2324 John F. Kennedy Blvd  
Jersey City, NJ 07304

**Ph:** 201-360-2502 **EM:** AswMcKnight@njleg.org

**Occupation:** Business Owner

**32**

**(Bergen and Hudson)** East Newark, Edgewater, Fairview, Guttenberg, Harrison (Hudson), Kearny, North Bergen, Secaucus, West New York



**Senator Nicholas J. Sacco (D)**

9060 Palisade Ave  
North Bergen NJ 07047

**Ph:** 201-295-0200 **EM:** SenSacco@njleg.org

**Occupation:** Director, North Bergen BOE



**Assemblywoman Angelica M. Jimenez (D)**

5600 Kennedy Blvd, Ste 104  
West New York NJ 07093

**Ph:** 201-223-4247 **EM:** AswJimenez@njleg.org

**Occupation:** Radiographer Specialist



**Assemblyman Vincent Prieto (D)**

1 Harmon Plaza, Ste 205  
Secaucus NJ 07094

**Ph:** 201-770-1303 **EM:** AsmPrieto@njleg.org

**Occupation:** Construction Code Official

**33**

**(Hudson)** Hoboken, Jersey City, Union City, Weehawken



**Senator Brian P. Stack (D)**

411 Palisades Ave  
Jersey City NJ 07307

**Ph:** 201-721-5263 **EM:** SenStack@njleg.org

**Occupation:** Mayor

## STATE LEGISLATORS DISTRICT LOCATOR

---



**Assemblywoman Annette Chaparro (D)**

80 River St, 2nd Floor  
Hoboken NJ 07030

**Ph:** 201-683-7917 **EM:** AswChaparro@njleg.org

**Occupation:** Clerk II, City of Hoboken



**Assemblyman Raj Mukherji (D)**

433 Palisade Ave  
Jersey City NJ 07307

**Ph:** 201-626-4000 **EM:** AsmMukherji@njleg.org

**Occupation:** Healthcare Lawyer and Investments

### 34

(Essex and Passaic) Clifton, East Orange, Montclair, Orange



**Senator Nia H. Gill, Esq. (D)**

39 South Fullerton Ave, 2nd Floor, Ste 7  
Montclair NJ 07042

**Ph:** 973-509-0388 **EM:** SenGill@njleg.org

**Occupation:** Attorney



**Assemblyman Thomas P. Giblin (D)**

1333 Broad St  
Clifton NJ 07013

**Ph:** 973-779-3125 **EM:** AsmGiblin@njleg.org

**Occupation:** Labor Union Officer



**Assemblywoman Sheila Y. Oliver (D)**

15-33 Halsted St, Ste 202  
East Orange NJ 07018

**Ph:** 973-395-1166 **EM:** AswOliver@njleg.org

**Occupation:** Administrator, Essex County

## STATE LEGISLATORS DISTRICT LOCATOR

35

**(Bergen and Passaic)** Elmwood Park, Garfield, Haledon, North Haledon, Paterson, Prospect Park



**Senator Nellie Pou (D)**

100 Hamilton Plaza, Ste 1405  
Paterson NJ 07505

**Ph:** 973-247-1555 **EM:** SenPou@njleg.org

**Occupation:** Assistant BA, City of Paterson



**Assemblywoman Shavonda E. Sumter (D)**

191 Market St  
Paterson NJ 07505

**Ph:** 973-925-7061 **EM:** AswSumter@njleg.org

**Occupation:** Healthcare Administration



**Assemblyman Benjie E. Wimberly (D)**

191 Market St  
Paterson NJ 07505

**Ph:** 973-925-7061 **EM:** AsmWimberly@njleg.org

**Occupation:** Joint Recreation Coordinator, Paterson

36

**(Bergen and Passaic)** Carlstadt, Cliffside Park, East Rutherford, Little Ferry, Lyndhurst, Moonachie, North Arlington, Passaic, Ridgefield, Ridgefield Park, Rutherford, South Hackensack, Teterboro, Wallington, Wood-Ridge



**Senator Paul A. Sarlo (D)**

496 Columbia Blvd, 1st Floor  
Wood-Ridge, NJ 07075

**Ph:** 201-804-8118 **EM:** SenSarlo@njleg.org

**Occupation:** Business Executive



**Assemblywoman Marlene Caride (D)**

613 Bergen Blvd  
Ridgefield NJ 07657

**Ph:** 201-943-0615 **EM:** AswCaride@njleg.org

**Occupation:** Lawyer

## STATE LEGISLATORS DISTRICT LOCATOR

---



**Assemblyman Gary S. Schaer (D)**

1 Howe Ave, Ste 302  
Passaic NJ 07055

**Ph:** 973-249-3665 **EM:** AsmSchaer@njleg.org

**Occupation:** Legislator

### 37

**(Bergen)** Alpine, Bogota, Cresskill, Englewood, Englewood Cliffs, Fort Lee, Hackensack, Leonia, Northvale, Palisades Park, Rockleigh, Teaneck, Tenafly



**Senator Loretta Weinberg (D)**

545 Cedar Lane  
Teaneck NJ 07666

**Ph:** 201-928-0100 **EM:** SenWeinberg@njleg.org

**Occupation:** Legislator



**Assemblyman Gordon M. Johnson (D)**

545 Cedar Lane  
Teaneck NJ 07666

**Ph:** 201-530-0469 **EM:** AsmJohnson@njleg.org

**Occupation:** Consultant



**Assemblywoman Valerie Vainieri Huttle (D)**

1 Engle St, Ste 108  
Englewood NJ 07631

**Ph:** 201-541-1118 **EM:** AswHuttle@njleg.org

**Occupation:** Funeral Director

### 38

**(Bergen and Passaic)** Bergenfield, Fair Lawn, Glen Rock, Hasbrouck Heights, Hawthorne, Lodi, Maywood, New Milford, Oradell, Paramus, River Edge, Rochelle Park, Saddle Brook



**Senator Robert M. Gordon (D)**

14-25 Plaza Rd, PO Box 398  
Fair Lawn NJ 07410

**Ph:** 201-703-9779 **EM:** SenGordon@njleg.org

**Occupation:** Senior Vice President, Avison Young



## STATE LEGISLATORS DISTRICT LOCATOR

---



**Assemblyman Timothy J. Eustace (D)**

205 Robin Rd, Ste 330  
Paramus NJ 07652

**Ph:** 201-576-9199 **EM:** AsmEustace@njleg.org

**Occupation:** Chiropractor



**Assemblyman Joseph A. Lagana (D)**

205 Robin Rd, Ste 330  
Paramus NJ 07652

**Ph:** 201-576-9199 **EM:** AsmLagana@njleg.org

**Occupation:** Attorney

**39**

**(Bergen and Passaic)** Bloomingdale, Closter, Demarest, Dumont, Emerson, Harrington Park, Haworth, Hillsdale, Mahwah, Montvale, Norwood, Oakland, Old Tappan, Park Ridge, Ramsey, Ringwood, River Vale, Saddle River, Upper Saddle River, Wanaque, Washington (Bergen), Westwood, Woodcliff Lake



**Senator Gerald Cardinale (R)**

350 Madison Ave  
Cresskill NJ 07626

**Ph:** 201-567-2324 **EM:** SenCardinale@njleg.org

**Occupation:** Dentist



**Assemblyman Robert Auth (R)**

1069 Ringwood Ave, Ste 312  
Haskell NJ 07420

**Ph:** 862-248-0491 **EM:** AsmAuth@njleg.org

**Occupation:** CEO, Plaza Travel and Insurance Svcs



**Assemblywoman Holly Schepisi (R)**

287 Kinderkamack Rd  
Westwood NJ 07675

**Ph:** 201-666-0881 **EM:** AswSchepisi@njleg.org

**Occupation:** Attorney/Entrepreneur

## STATE LEGISLATORS DISTRICT LOCATOR

---

# 40

**(Bergen, Essex, Morris and Passaic)** Allendale, Cedar Grove, Franklin Lakes, Ho-Ho-Kus, Little Falls, Midland Park, Pequannock, Pompton Lakes, Ridgewood, Riverdale, Totowa, Waldwick, Wayne, Woodland Park, Wyckoff



**Senator Kevin J. O'Toole (R)**

155 Route 46 West, Ste 108  
Wayne NJ 07470

**Ph:** 973-237-1360 **EM:** SenOToole@njleg.org

**Occupation:** Attorney



**Assemblyman Scott T. Rumana (R)**

155 Route 46, West Ste 108  
Wayne NJ 07470

**Ph:** 973-237-1362 **EM:** AsmRumana@njleg.org

**Occupation:** Attorney



**Assemblyman David C. Russo (R)**

22 Paterson Ave  
Midland Park NJ 07432

**Ph:** 201-444-9719 **EM:** AsmRusso@njleg.org

**Occupation:** Attorney

## STATE LEGISLATIVE LEADERSHIP

---

### STATE SENATE LEADERSHIP

---



Senate President

**Stephen M. Sweeney**, Dist 3

---

#### DEMOCRATIC LEADERSHIP

*Majority Leader*

**Loretta Weinberg**, Dist 37

*Senate President Pro Tempore*

**Nia H. Gill**, Dist 34

*Deputy Majority Leader*

**Paul A. Sarlo**, Dist 36

*Majority Conference Leader*

**Robert M. Gordon**, Dist 38

*Assistant Majority Leaders*

**James Beach**, Dist 6

**Linda Greenstein**, Dist 14

**M. Teresa Ruiz**, Dist 29

*Senate Majority Whip*

**Sandra Cunningham**, Dist 31

---

#### REPUBLICAN LEADERSHIP

*Minority Leader*

**Thomas H. Kean, Jr.** Dist 21

*Deputy Republican Leader*

**Diane B. Allen**, Dist 7

*Republican Conference Leader*

**Robert W. Singer**, Dist 30

*Republican*

*Deputy Conference Leader*

**Jennifer Beck**, Dist 11

*Assistant Republican Leader*

**Joseph Pennacchio**, Dist 26

*Republican Budget Officer*

**Anthony R. Bucco**, Dist 25

*Secretary of the Senate*

**Jennifer A. McQuaid**

## STATE LEGISLATIVE LEADERSHIP

---

### GENERAL ASSEMBLY LEADERSHIP

---



Speaker

**Vincent Prieto**, Dist 32

### DEMOCRATIC LEADERSHIP

---

*Majority Leader*

**Louis D. Greenwald**, Dist 6

*Assembly Speaker Pro Tempore*

**Jerry Green**, Dist 22

*Assembly Majority Conference Leader*

**Shavonda E. Sumter**, Dist 35

*Deputy Speakers*

**John J. Burzichelli**, Dist 3

**Wayne P. DeAngelo**, Dist 14

**Gordon Johnson**, Dist 37

**Pamela R. Lampitt**, Dist 6

**Gary S. Schaefer**, Dist 36

**L. Grace Spencer**, Dist 29

**Valerie Vaineri Huttler**, Dist 37

**Benjie E. Wimberly**, Dist 35

**John S. Wisniewski**, Dist 19

*Deputy Majority Leaders*

**Joseph V. Egan**, Dist 17

**Thomas P. Giblin**, Dist 34

**Reed Gusciora**, Dist 15

**Angelica M. Jimenez**, Dist 32

**Annette Quijano**, Dist 20

*Deputy Speaker*

*Pro Tempore*

**Daniel Benson**, Dist 14

*Deputy Conference Leader*

**Timothy J. Eustace**, Dist 38

*Parliamentarian*

**Craig J. Coughlin**, Dist 19

*Deputy Parliamentarian*

**Joseph A. Lagana**, Dist 38

*Majority Whip*

**Herb Conaway, Jr.** Dist 7

*Deputy Majority Whip*

**Ralph R. Caputo**, Dist 28

*Appropriations Chair*

**John J. Burzichelli**, Dist 3

*Budget Chair*

**Gary S. Schaefer**, Dist 36

*Speaker Emeritus*

**Sheila Y. Oliver**, Dist 34

## STATE LEGISLATIVE LEADERSHIP

---

### REPUBLICAN LEADERSHIP

---

*Assembly Republican Leader*

**Jon M. Bramnick**, Dist 21

*Republican Conference Leader*

**David P. Rible**, Dist 30

*Deputy Republican Conference Leader*

**Nancy F. Munoz**, Dist 21

*Republican Whip*

**Scott T. Rumana**, Dist 40

*Assistant Republican Whips*

**Jack M. Ciattarelli**, Dist 16

**Erik Peterson**, Dist 23

*Republican Budget Officer*

**Declan J. O'Scanlon**, Dist 13

*Deputy Republican Leaders*

**Anthony M. Bucco**, Dist 25

**Amy H. Handlin**, Dist 13

**David W. Wolfe**, Dist 10

*Republican Policy Co-Chairs*

**DiAnne C. Gove**, Dist 9

**Brian E. Rumpf**, Dist 9

*Assistant Republican Leader*

**Chris A. Brown**, Dist 2

*Parliamentarian*

**Michael Patrick Carroll**, Dist 25

*Appropriations Officer*

**John DiMaio**, Dist 23

*Assembly Clerk*

**Dana M. Burley**

## LEGISLATIVE COMMITTEES

---

### SENATE COMMITTEES

---

#### GROUP 1:

---

**Community and Urban Affairs (SCU)** – Van Drew (Chair); Rice (V.Chair); Beck; Connors; Stack.

**Environment and Energy (SEN)** – Smith (Chair); Greenstein (V.Chair); Bateman; Codey; Thompson.

**Labor (SLA)** – Madden (Chair); Vitale (V.Chair); Addiego; Bucco; Cunningham.

**Transportation (STR)** – Sacco (Chair); Gordon (V.Chair); Cruz-Perez; Holzapfel; Pennacchio.

#### GROUP 2:

---

**Budget and Appropriations (SBA)** – Sarlo (Chair); Stack (V.Chair); Beck; Bucco; Cunningham; Diegnan; Greenstein; O’Toole; Oroho; Pou; Ruiz; Thompson; Van Drew.

**Commerce (SCM)** – Gill (Chair); Lesniak (V.Chair); Beach; Cardinale; Kean; Scutari.

**Health, Human Services and Senior Citizens (SHH)** – Vitale (Chair); Madden (V.Chair); Addiego; Allen; Codey; Gordon; Rice; Singer; Whelan.

#### GROUP 3:

---

**Economic Growth (SEG)** – Lesniak (Chair); Cruz-Perez (V.Chair); Kyrillos; Oroho; Whelan.

**Education (SED)** – Ruiz (Chair); Turner (V.Chair); Allen; Beach; Doherty.

**Higher Education (SHI)** – Cunningham (Chair); Pou (V.Chair); Kean; Sarlo; Singer.

**Law and Public Safety (SLP)** – Greenstein (Chair); Diegnan (V.Chair); Bateman; Holzapfel; Sacco.

#### GROUP 4:

---

**Judiciary (SJU)** – Scutari (Chair); Gill (V.Chair); Bateman; Cardinale; Doherty; Kyrillos; Lesniak; O’Toole; Pou; Sarlo; Smith; Stack; Weinberg.

**Military and Veterans’ Affairs (SMV)** – Beach (Chair); Van Drew (V.Chair); Allen; Connors; Cruz-Perez.

**State Government, Wagering, Tourism and Historic Preservation (SSG)** – Whelan (Chair); Turner (V.Chair); Diegnan; Oroho; Thompson.

## LEGISLATIVE COMMITTEES

---

### STANDING COMMITTEE

---

**Legislative Oversight (SLO)** – Gordon (Chair); Weinberg (V.Chair); Kean; Kyrillos; Ruiz; Sarlo.

### ASSEMBLY COMMITTEES

---

#### GROUP A:

---

**Consumer Affairs (ACO)** – Moriarty (Chair); Quijano (V.Chair); Karabinchak; Kean.

**Financial Institutions and Insurance (AFI)** – Coughlin (Chair); Lampitt (V.Chair); Auth; Caride; Ciattarelli; Danielsen; Downey; Gusciora; Handlin; Howarth; Lagana; McKeon.

**Health and Senior Services (AHE)** – Conaway (Chair); Eustace (V.Chair); Benson; DeCroce; Green; Jimenez; Kennedy; McKnight; Munoz; Peterson; Pinkin; Schepisi; Sumter.

**Higher Education (AHI)** – Jasey (Chair); Giblin (V.Chair); Barclay; Clifton; Gove; Holley; Mosquera; Rible; Schaer.

**Telecommunications and Utilities (ATU)** – DeAngelo (Chair); Wimberly (V.Chair); Egan; Houghtaling; Phoebus; Pintor Marin; Rumpf; Zwicker.

**Tourism and Gaming (ATG)** – Caputo (Chair); Mazzeo (V.Chair); Brown; Burzichelli; Dancer; Land; Vainieri Huttle.

#### GROUP B:

---

**Appropriations (AAP)** – Burzichelli (Chair); Conaway; DiMaio; Lagana; Lampitt; Mosquera; Phoebus; Quijano; Schaer; Schepisi.

**Commerce and Economic Development (ACE)** – Johnson (Chair); Pintor Marin (V.Chair); Auth; Bucco; Chiaravalloti; Coughlin; DeCroce; Eustace; Mukherji; Munoz; Muoio; Oliver.

**Housing and Community Development (AHO)** – Green (Chair); Jasey (V.Chair); Clifton; Holley; Jones; Rodriguez-Gregg.

**Law and Public Safety (ALP)** – Benson (Chair); Danielsen (V.Chair); Barclay; Carroll; Chaparro; Peterson; Pinkin; Rible; Sumter.

**Regulated Professions (ARP)** – Giblin (Chair); Jimenez (V.Chair); Ciattarelli; Downey; Handlin; Kean; Mazzeo; Moriarty; Zwicker.

**Regulatory Oversight and Reform and Federal Relations (ARO)** – Gusciora (Chair); Wimberly (V.Chair); Brown; Rumpf; Tucker.

## LEGISLATIVE COMMITTEES

---

### GROUP C:

**Education (AED)** – Caride (Chair); Singleton (V.Chair); Auth; Caputo; Jasey; Jimenez; Jones; McKnight; Ribble; Taliaferro; Wolfe.

**Judiciary (AJU)** – McKeon (Chair); Johnson (V.Chair); Carroll; Lagana; Muoio; Peterson; Zwicker.

**Labor (ALA)** – Egan (Chair); Sumter (V.Chair); Coughlin; Dancer; Gusciora; Houghtaling; Mukherji; Space; Webber.

**Military and Veterans' Affairs (AMV)** – Tucker (Chair); DeAngelo (V.Chair); Andrzejczak; Gove; Howarth; Land.

**Transportation and Independent Authorities (ATR)** – Wisniewski (Chair); Vainieri Huttle (V.Chair); Benson; Chaparro; Chiaravallotti; Clifton; DeCroce; Giblin; Kennedy; McGuckin; Moriarty; Oliver; Rumana.

**Women and Children (AWC)** – Lampitt (Chair); Mosquera (V.Chair); Holley; Munoz; Phoebus.

### GROUP D:

**Agriculture and Natural Resources (AAN)** – Andrzejczak (Chair); Taliaferro (V.Chair); Dancer; Houghtaling; Space.

**Budget (ABU)** – Schaer (Chair); Burzichelli (V.Chair); Bucco; DiMaio; Johnson; McKeon; Mukherji; Muoio; O'Scanlon; Pintor Marin; Rodriguez-Gregg; Singleton; Wimberly.

**Environment and Solid Waste (AEN)** – McKeon (V.Chair); Karabinchak; Rumana; Wisniewski; Wolfe.

**Homeland Security and State Preparedness (AHS)** – Quijano (Chair); Pinkin (V.Chair); Chaparro; Land; McGuckin; Russo.

**Human Services (AHU)** – Vainieri Huttle (Chair); Tucker (V.Chair); Howarth; Jones; McKnight; Phoebus.

**State and Local Government (ASL)** – Singleton (Chair); Conaway (V.Chair); Carroll; Eustace; Webber.



## LEGISLATIVE COMMITTEES

---

### JOINT COMMITTEES

---

#### **Joint Budget Oversight**

Senate: Anthony R. Bucco; Paul A. Sarlo; Loretta Weinberg.  
Assembly: John J. Burzichelli; Declan J. O'Scanlon; Gary S. Schaer

#### **Joint Committee on Economic Justice and Equal Employment Opp**

Senate: Jennifer Beck; Nellie Pou; Ronald L. Rice; Shirley K. Turner; Loretta Weinberg  
Assembly: Pamela R. Lampitt; Gabriela M. Mosquera; Sheila Y. Oliver; Holly Schepisi; Benjie E. Wimberly.

#### **Joint Committee on Housing Affordability**

Senate: Christopher J. Connors; Nilsa Cruz-Perez; Ronald L. Rice; Samuel D. Thompson; Jeff Van Drew.

#### **Joint Committee on the Public Schools**

Senate: Diane B. Allen; James Beach; Patrick J. Diegnan; Ronald L. Rice; Samuel D. Thompson.  
Assembly: Ralph R. Caputo; BettyLou DeCroce; Mila M. Jasey; Sheila Y. Oliver; David P. Ribble; Benjie E. Wimberly; David W. Wolfe.

#### **Joint Legislative Committee on Ethical Standards**

Public Members: John E. Wallace, Jr. - Chair; Stanley L. Bergman, Jr.; Ronda Casson Cotroneo; John J. Harper; Frederick M. Herrmann; Daniel P. Mecca; Michael J. Mitzner; Joan Quigley

#### **Joint State Leasing and Space Utilization**

Senate: Nicholas P. Scutari

## THE NEW JERSEY 114TH CONGRESS

---

### UNITED STATES SENATE

---



**Cory A. Booker (D)**

141 Hart Senate Office Bldg  
Washington DC 20510-3003

**Ph:** 202-224-3224 **Fax:** 202-228-8378

**Web:** [www.booker.senate.gov](http://www.booker.senate.gov)

**DO:** One Gateway Center, 23rd Floor,  
11-43 Raymond Plaza West, Newark NJ 07102

**Ph:** 973-639-8700 **Fax:** 973-639-8723

**Committees:** Commerce, Science, & Transportation; Environment & Public Works; Small Business and Entrepreneurship



**Robert Menendez (D)**

528 Hart Senate Office Building  
Washington DC 20510-3002

**Ph:** 202-224-4744 **Fax:** 202-228-2197

**Web:** [www.menendez.senate.gov](http://www.menendez.senate.gov)

**DO:** One Gateway Center, Suite 1100, Newark NJ 07102

**Ph:** 973-645-3030 **Fax:** 973-645-0502

**Committees:** Banking, Housing & Urban Affairs; Finance; Foreign Relations

### UNITED STATES HOUSE OF REPRESENTATIVES

---

#### 1ST CONGRESSIONAL DISTRICT

---



**Donald Norcross (D)**

United States House of Representatives  
1531 Longworth House Office Bldg.  
Washington, DC 20515

**Ph:** 202-225-6501 **Fax:** 202-225-6583

**Web:** [www.norcross.house.gov](http://www.norcross.house.gov)

**DO:** 10 Melrose Avenue Ste 210 Cherry Hill NJ 08330-1751

**Ph:** 856-427-7000 **Fax:** 856 427-4109

**Committees:** Armed Services; Budget

## 2ND CONGRESSIONAL DISTRICT

---



**Frank A. LoBiondo (R)**  
United States House of Representatives  
2427 Rayburn House Office Bldg.  
Washington DC 20515-3002  
**Ph:** 202-225-6572 **Fax:** 202-225-3318

**Web:** [www.lobiondo.house.gov](http://www.lobiondo.house.gov)

**DO:** 5914 Main St Ste 103 Mays Landing NJ 08330-1751

**Ph:** 800-471-4450 **Fax:** 609-625-5071

**Committees:** Armed Services; Permanent Select Committee on Intelligence; Transportation and Infrastructure

## 3RD CONGRESSIONAL DISTRICT

---



**Tom MacArthur (R)**  
United States House of Representatives  
506 Cannon House Office Bldg.  
Washington DC 20515  
**Ph:** 202-225-4765 **Fax:** 202-225-0778

**Web:** [www.macarthur.house.gov](http://www.macarthur.house.gov)

**DO:** Gibson House Community Center 535 East Main Street Marlton NJ 08053

**Ph:** 856-267-5182 **Fax:** 856-571-4697

**Committees:** Armed Services; Natural Resources

## 4TH CONGRESSIONAL DISTRICT

---



**Christopher Smith (R)**  
United States House of Representatives  
2373 Rayburn House Office Bldg.  
Washington DC 20515-3004  
**Ph:** 202-225-3765 **Fax:** 202-225-7768

**Web:** [www.chrissmith.house.gov](http://www.chrissmith.house.gov)

**DO:** 4573 South Broad Street Hamilton NJ 08620

**Ph:** 609-585-7878 **Fax:** 609-585-9155

**Committees:** Foreign Affairs; Security and Cooperation in Europe

## 5TH CONGRESSIONAL DISTRICT

---



**Scott Garrett (R)**  
United States House of Representatives  
2232 Rayburn House Office Bldg.  
Washington DC 20515-3005

**Ph:** 202-225-4465    **Fax:** 202-225-9048

**Web:** [www.garrett.house.gov](http://www.garrett.house.gov)

**DO:** 266 Harristown Rd Ste104 Glen Rock NJ 07452

**Ph:** 201-444-5454    **Fax:** 201-444-5488

**Committees:** Budget; Financial Services

## 6TH CONGRESSIONAL DISTRICT

---



**Frank Pallone Jr. (D)**  
United States House of Representatives  
237 Cannon House Office Bldg.  
Washington DC 20515-3006

**Ph:** 202-225-4671    **Fax:** 202-225-9665

**Web:** [www.pallone.house.gov](http://www.pallone.house.gov)

**DO:** Kilmer Sq 67/69 Church St New Brunswick NJ 08901-1242

**Ph:** 732-249-8892    **Fax:** 732-249-1335

**Committees:** Energy & Commerce

## 7TH CONGRESSIONAL DISTRICT

---



**Leonard Lance (R)**  
United States House of Representatives  
2352 Rayburn House Office Bldg.  
Washington DC 20515-3007

**Ph:** 202-225-5361    **Fax:** 202-225-9460

**Web:** [www.lance.house.gov](http://www.lance.house.gov)

**DO:** 425 North Avenue, Westfield NJ 07090

**Ph:** 908-518-7733    **Fax:** 908-518-7751

**Committees:** Energy & Commerce

## 8TH CONGRESSIONAL DISTRICT

---



**Albio Sires (D)**  
United States House of Representatives  
2342 Rayburn House Office Bldg.  
Washington DC 20515-3008

**Ph:** 202-225-7919 **Fax:** 202-226-0792

**Web:** visit: [www.sires.house.gov](http://www.sires.house.gov)

**DO:** 5500 Palisade Avenue Ste A West New York NJ 07093

**Ph:** 201-558-0800 **Fax:** 201-617-2809

**Committees:** Foreign Affairs; Transportation & Infrastructure

## 9TH CONGRESSIONAL DISTRICT

---



**Bill Pascrell, Jr. (D)**  
United States House of Representatives  
2370 Rayburn House Office Bldg.  
Washington DC 20515-3009

**Ph:** 202-225-5751 **Fax:** 202-225-5782

**Web:** [www.pascrell.house.gov](http://www.pascrell.house.gov)

**DO:** Robert A. Roe Bldg. Ste 500 200 Federal Plaza Paterson NJ 07505-1953

**Ph:** 973-523-5152 **Fax:** 973-523-0637

**Committees:** Budget; Ways and Means

## 10TH CONGRESSIONAL DISTRICT

---



**Donald Payne, Jr. (D)**  
United States House of Representatives  
103 Cannon House Office Bldg.  
Washington DC 20515-3010

**Ph:** 202-225-3436 **Fax:** 202-225-4160

**Web:** [www.payne.house.gov](http://www.payne.house.gov)

**DO:** LeRoy F. Smith Public Safety Building 14th Floor 60 Nelson Place Newark, NJ 07102

**Ph:** 973-645-3213 **Fax:** 973-645-5902

**Committees:** Homeland Security; Small Business

## 11TH CONGRESSIONAL DISTRICT

---



**Rodney P. Frelinghuysen (R)**  
United States House of Representatives  
2306 Rayburn House Office Bldg.  
Washington DC 20515-3011

**Ph:** 202-225-5034 **Fax:** 202-225-3186

**Web:** [www.frelinghuysen.house.gov](http://www.frelinghuysen.house.gov)

**DO:** 30 Schuyler Place 2nd Fl Morristown NJ 07960

**Ph:** 973-984-0711 **Fax:** 973-292-1569

**Committees:** Appropriations

## 12TH CONGRESSIONAL DISTRICT

---



**Bonnie Watson Coleman (D)**  
United States House of Representatives  
126 Cannon House Office Bldg.  
Washington DC 20515

**Ph:** 202-225-5801 **Fax:** 202-225-6025

**Web:** [www.watsoncoleman.house.gov](http://www.watsoncoleman.house.gov)

**DO:** 850 Bear Tavern Road Ste 201 Ewing NJ 08628

**Ph:** 609-883-0026 **Fax:** 609-883-2093

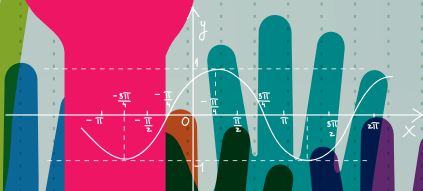
**Committees:** Homeland Security; Oversight and Government; Select Panel



WORKSHOP  
2016  
PARTNERS IN STUDENT  
ACHIEVEMENT

October 25 - 27  
Atlantic City Convention Center

$$y_{\min} = -1$$
$$x - \frac{\pi}{4} = -\pi + 2k\pi$$
$$x = \frac{\pi}{4} - \pi + 2k\pi$$
$$x = -\frac{3\pi}{4} + 2k\pi$$



## RECOGNIZING THE VALUE OF EVERY STUDENT

Co-sponsored by: NJSBA • NJASBO • NJASA



[www.workshop.njsba.org](http://www.workshop.njsba.org)